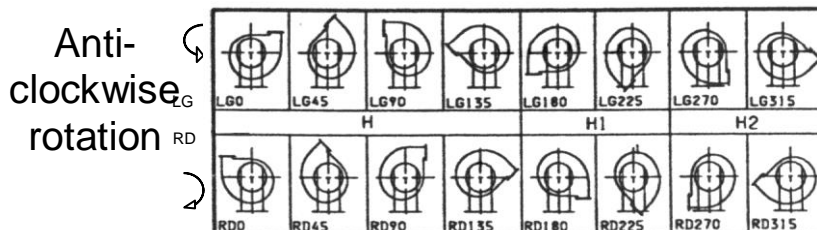


FAN WITH BACKWARDLY BLADES
HIGH EFFICIENCY
MOD. "PR"



Employed for suction and transportation of very dusty air, sawdust, wood shavings and several granular materials, except filamentary materials.



Loading allowance $\pm 5\%$

Noisiness allowance + 3 dB measured in a free field at the distance of 1,5 mt from the fan at the greatest output load, connected to the pipes in suction and in pressing according to the UNI regulations.

Mod. PR	Kw	HP	Turns Nr.	dB (A)	Ø suction mouth (mm)	Pressing mouth (mm)	Performances in suction						
<u>250</u> <u>2</u>	0,37	0.5	2780	69	185	207 X 148	Mc/h	750	830	930	1080	1190	1330
							Prev.(mm)	88	82	78	71	62	51
<u>280</u> <u>2</u>	0,55	0,75	2780	71	205	231 X 166	Mc/h	1080	1190	1330	1500	1700	1900
							Prev.(mm)	97	92	86	76	64	51
<u>280</u> <u>2</u>	0,75	1	2850	72	205	231 X 166	Mc/h	1080	1190	1330	1500	1700	1900
							Prev.(mm)	112	106	98	90	80	68
<u>310</u> <u>2</u>	1,1	1,5	2850	75	228	258 X 185	Mc/h	1500	1700	1900	2100	2400	2700
							Prev.(mm)	122	116	109	96	82	65
<u>310</u> <u>2</u>	1,5	2	2850	75	228	258 X 185	Mc/h	1500	1700	1900	2150	2400	2700
							Prev.(mm)	143	133	127	116	102	88
<u>350</u> <u>2</u>	2,2	3	2850	80	255	288 X 205	Mc/h	2150	2400	2700	3050	3400	3850
							Prev.(mm)	184	172	162	148	130	113
<u>400</u> <u>2</u>	3	4	2900	82	285	322 X 229	Mc/h	3400	3800	4200	4700	5400	6100
							Prev.(mm)	196	183	163	139	110	73
<u>400</u> <u>2</u>	4	5,5	2900	83	285	322 X 229	Mc/h	3450	3850	4250	4750	5400	6150
							Prev.(mm)	228	212	196	172	145	101
<u>450</u> <u>2</u>	5,5	7,5	2900	86	320	361 X 256	Mc/h	4700	5400	6100	6800	7600	8500
							Prev.(mm)	246	230	205	175	138	97
<u>450</u> <u>2</u>	7,5	10	2900	87	320	361 X 256	Mc/h	4750	5400	6150	6850	7650	8500
							Prev.(mm)	287	268	246	215	182	125
<u>500</u> <u>2</u>	11	15	2930	90	360	404 X 288	Mc/h	6800	7600	8500	9500	10800	12000
							Prev.(mm)	316	296	263	224	177	120
<u>500</u> <u>2</u>	15	20	2930	90	360	404 X 288	Mc/h	6850	7650	8500	9500	10800	12000
							Prev.(mm)	367	342	315	276	233	180
<u>560</u> <u>2</u>	18,5	25	2930	93	405	453 X 322	Mc/h	9500	10800	12000	13500	15300	17000
							Prev.(mm)	395	369	329	280	220	151
<u>560</u> <u>2</u>	22	30	2930	94	405	453 X 322	Mc/h	9500	10800	12000	13500	15300	17000
							Prev.(mm)	461	430	395	345	285	221